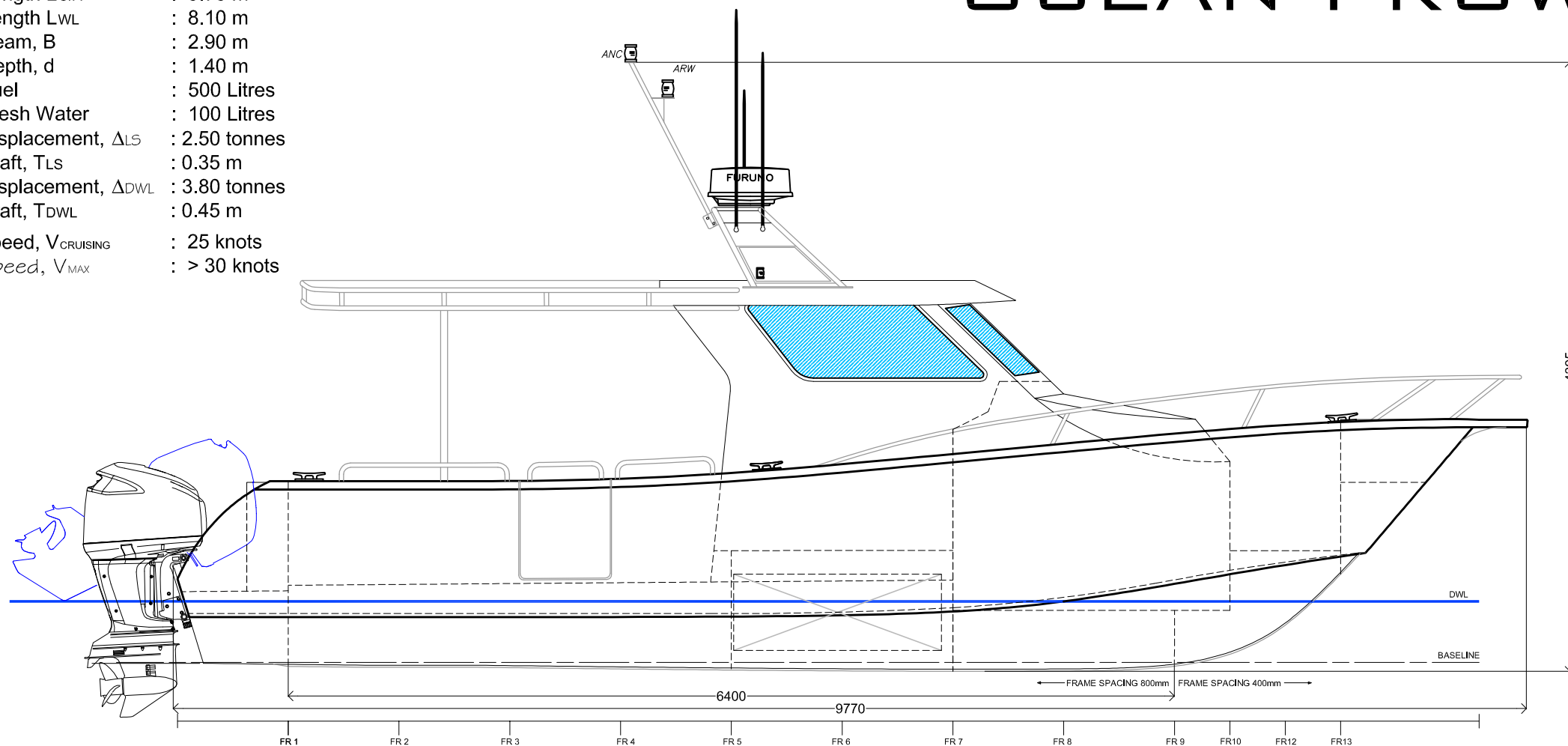


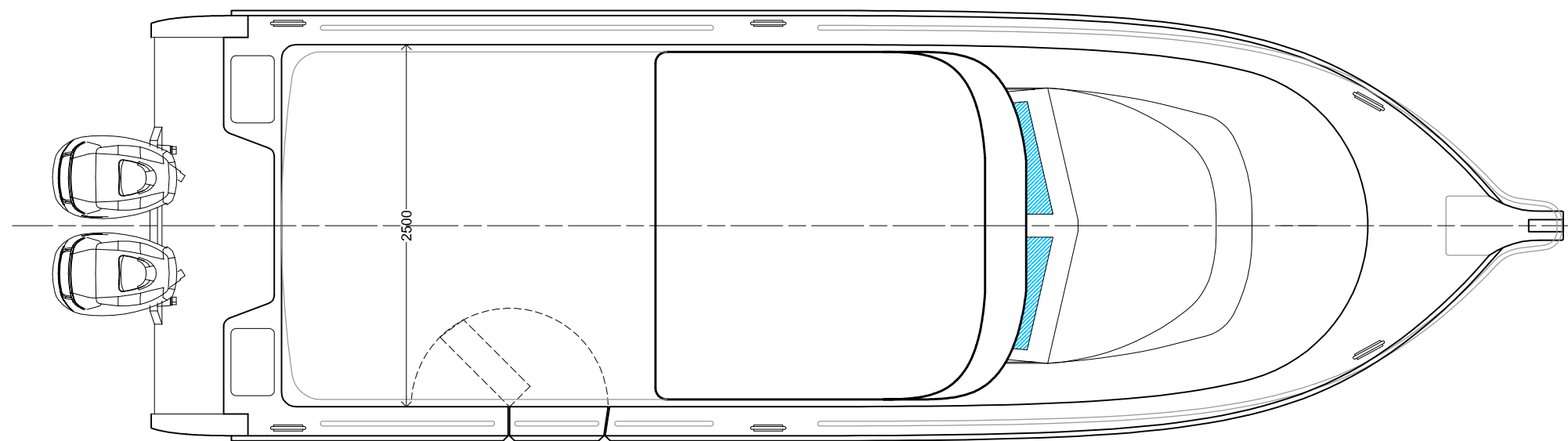
**PRINCIPAL PARTICULARS**

Length L<sub>O/A</sub> : 9.70 m  
 Length L<sub>WL</sub> : 8.10 m  
 Beam, B : 2.90 m  
 Depth, d : 1.40 m  
 Fuel : 500 Litres  
 Fresh Water : 100 Litres  
 Displacement, Δ<sub>LS</sub> : 2.50 tonnes  
 Draft, T<sub>LS</sub> : 0.35 m  
 Displacement, Δ<sub>DWL</sub> : 3.80 tonnes  
 Draft, T<sub>DWL</sub> : 0.45 m  
 Speed, V<sub>CRUISING</sub> : 25 knots  
 Speed, V<sub>MAX</sub> : > 30 knots

# OCEAN PROWLER 9400

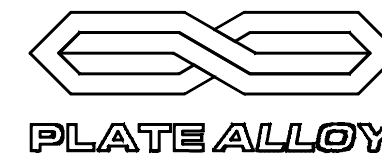


1 VIEW : PROFILE



2 VIEW : PLAN

- DESIGN IN COMPLIANCE WITH NSCV 2010
- MATERIAL
  - BOTTOM,CHINE, TRANSOM, 6mm 5083 ALUMINIUM
  - SIDES DECK GUNWALE, 4mm 5083 ALUMINIUM
  - WHEEL HOUSE AND COACH ROOF, 3mm 5083 ALUMINIUM



Kit supply and cutting by Plate Alloy Australia P/L.  
 Design copyright (c) Naval Architects Australia  
[www.platealloy.com](http://www.platealloy.com)



ACTUAL KIT MAY DIFFER FROM PICTURES SHOWN

This Design including specifications, drawings & its contents are the exclusive property of NAAust/SeaLife Designs & is furnished on a confidential basis, with the expressed agreement that it will not be sold, transferred, copied, traced, photographed or reproduced in any manner whatsoever in whole or part, with out the written consent of NAAust/SeaLife Designs. The recipient agrees not to disclose to any other party information herein, nor to use such information except for the purposes contracted for.

UNIT 1 /15 VIRGINIA ST GEEBUNG BRISBANE 4034  
 PH: (07) 3265 2755 FAX: (07) 3865 1421 EMAIL: [info@naaust.com](mailto:info@naaust.com) [www.naaust.com](http://www.naaust.com)